



# Florida Lake Management Society

Volume 19 No.1

Fall 2007

## Officers

### **President**

Clell Ford

### **Vice President**

Shailesh K. Patel

### **Secretary**

Shannon Carter Wetzel

### **Treasurer**

Mike Perry

### **Past President**

John Burns

## Board of Directors

Dean Dobberfuhl

Sean McGlynn

Todd Olson

Mike Coveney

Chuck Hanlon

Kelli Levy

Dharmen Setaram

Ann Shortelle

Julie Terrell

Steve Weinsier

## Administrative Assistant

Maryann Utegg

[flmshome@aol.com](mailto:flmshome@aol.com)

## President's Corner

Golly. That means that I'm president! I kid about getting this position by not avoiding that train, but really it is a great honor to serve the Florida Lake Management Society as its President, especially this year.

We all enjoyed a record-breaking symposium in Naples last June. We not only hosted the Southeast Lakes Management Conference, but we had more than 200 registered attendees – that is at least 25 more lake management professionals than at any other conference in our eighteen year history. I want to personally thank Chuck Hanlon for negotiating the excellent venue of the Naples Grande. He also needs a personal thank you from everyone who took the sunset cruise—that was without a doubt the highlight of the conference, and may have erased from everyone's memory my unfortunate accidents with the projector remote control during my talk. I can only hope.

Now, FLMS has the honor, privilege and responsibility of hosting the 2007 North American Lake Management Society International Symposium, "Understanding the Science of Lake Management" being held at the Coronado Springs Resort at Disney World October 30 through November 2. Hopefully you have all gotten your travel approved and reservations made. In this day of very tight travel budgets, particularly for government employees, this is a golden opportunity to attend the international symposium, right in our own back swamp. I look forward to seeing each of you there.

A few words are in order about where we are as a society. Fiscally, we are as healthy as we have ever been, but that is not to say our goal is to be fiscally healthy. We, your executive officers and board are the stewards of the resources that you have entrusted to us—kind of like stock invested in a company, except that this company is staffed with mostly volunteers. As stewards, we need to protect your investment in Florida Lakes. How we go about that is what every president of this society struggles with; our strength lies in you, our members but we sometimes do not do a very good job of tapping our strength, especially when it comes to local activities. Sure, we all turn out when the venue is St. Augustine, or Naples, or Orlando. But shouldn't we ask ourselves, is that where we really make a difference in the effort to improve, preserve and protect Florida's most precious freshwater ecosystems? My personal answer to that question is that the difference is made when we actually reduce the levels of anthropogenic contaminants that make it into our surface waters. Or put more simply—convincing my neighbor that when she or he fertilizes their lawn, any excess is going to go to turning their lakes green. Convincing the knuckleheaded special benefit district board for Lake X (apologies to the Lake X SBD) that they do need to protect submerged and emergent aquatic plants to improve the overall health of their lake, rather than promoting complete eradication of all aquatic plants. In a nutshell, our impact as professional lake managers, our stewardship of our natural resources must be local.

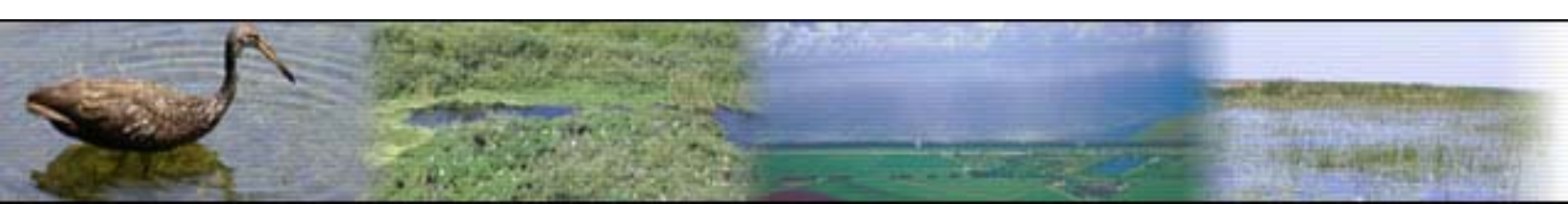
We must educate first ourselves and then those around us most able to make a difference. And we must not back down. And you ask, Mr. President from that most rural of Counties, how do we accomplish this? One way is by getting more involved in one of the five, soon to be six, FLMS chapters! Take the Southwest FLMS Chapter for example; they sponsor lake cleanups, such as the one featured on our web site, where Kelli Hammer Levy can be seen reclining on top of a pile of garbage dug from Lake Seminole in Pinellas County; this particular cleanup attracted more than 450 volunteers who collected 20 tons of garbage. The Southwest chapter has helped to sponsor weekends in your watershed for local homeowners associations. The Central Chapter conducted lake shoreline restoration training and demonstration projects with the assistance of the University of Florida. The Northwest Florida Chapter, working in conjunction with Okaloosa-Walton College and the Mattie Kelly Cultural and Environmental Institute, is planning to host a symposium on the Choctawhatchee River and Bay in conjunction with our 19<sup>th</sup> Annual Symposium this coming June.

That makes a reasonable segue to talking about next June. Since we've almost survived this hurricane season, please mark June 2008 on your calendars to join your fellow lake management professionals at the Sandestin Resort, just east of Destin in the panhandle. Sean McGlynn and his team are putting together a fantastic symposium that promises to educate everyone, particularly those of us who think the only lakes in Florida are on the peninsula! Once again, we are hosting the Southeast Regional Lakes Management Conference for NALMS, and because of the location, and the promise of some "border war" sessions, we expect a large turnout from our colleagues in Alabama, Georgia, Tennessee, North Carolina and South Carolina.

So, look for announcements either by e-mail or on [www.flms.net](http://www.flms.net) for a chapter meeting near you, and then take the time to attend. Finally, thank you for entrusting me with this president's job for the coming year and I look forward to seeing all of you, either at a chapter meeting, at NALMS 2007, or somewhere in between.

Clell J. Ford, President

Florida Lake Management Society



## Past President's Message

Given the support of the many lake management professionals and environmental advocates that make up our membership, FLMS represents one of the more active Affiliates of the North American Lake Management Society (NALMS). FLMS recently hosted the SE Regional NALMS Conference, is hosting the upcoming NALMS National Conference in Orlando, FL at Disney's Coronado Springs Resort (Oct. 29 – Nov. 3, 2007), and will again host the SE Regional NALMS Conference in Destin, FL, 2008. The FLMS membership continues to grow at a very healthy rate and our own Annual Conferences are growing in participation as evidenced by unexpected early sell-outs of available hotel rooms. Estimating attendance to the FLMS Annual Conference has become increasingly difficult due to the growing conference attendance each year. Our Annual Conference in Naples, FL this past summer was a grand event and our Conference Chair, Chuck Hanlon, and Program Chair, Mike Coveney, are to be congratulated for all their efforts. Congratulations are also in order for all of our speakers and poster presenters for their excellent work and presentation of their papers.

As FLMS Past President, I will continue to serve on the Board of Directors and give our new President, Clell Ford, all the support he will need to help FLMS continue to meet its goals and serve its mission. This past year, The FLMS Board of Directors tentatively approved inclusion of a student representative on the Board. Improving student participation in the Society is a goal that I believe FLMS will continue to strive towards over the next year to help keep the Society fresh with new ideas and to better serve the educational aspects of our mission. As I stated in the opening remarks of the Naples Conference, the continued participation of so many FLMS members and its past Presidents over the years is what has made this Society such an asset to Florida's natural resources and the lakes that we all enjoy! I look forward to joining the past FLMS Presidents in their efforts to keep our society strong and focused on its unique and important mission.

It was a pleasure and a true honor to serve as President of the Florida Lake Management Society (FLMS) during 2006-2007. I am not certain how I came to the helm of this great organization, but...

I BELIEVE there remains a bright future for Florida's many lakes and rivers even as we struggle with population growth, water supply needs, drought, the threat of hurricanes, and budget cuts due to belt-tightening in Tallahassee;

I BELIEVE we can preserve and restore our waters for future generations;

I BELIEVE we can accomplish these things because we have the technical ability to do so and the responsibility for maintaining a sustainable environment for ourselves, our neighbors and for those who will inherit the conditions we leave behind.

Thanks for the opportunity,

John Burns, FLMS Past President



### Join FLMS Now!

**Annual Dues (Includes Newsletter)**

**Student / Volunteer FREE**

**Individual \$25**

**Non-Profit Organization \$35**

**Business/Corporate \$65**

**Contributor \$100**

**Sponsor \$250**

### Remember !

Your annual membership is included in the conference registration. If you did not attend last year's conference, please visit the following website to register as a FLMS member.

[www.flms.net](http://www.flms.net)

Check out the FLMS website for Society updates!

### ***FLMS is a 501c (3) Tax Exempt Organization – Donations are Tax Deductible***

*The Florida Lake Management Society (FLMS) is a 501(c)(3) Nonprofit Organization. A copy of the official registration and financial information may be obtained from the Division of Consumer Services by calling toll-free within the State, 1-800-435-7352. Registration does not imply endorsement, approval, or recommendation by the State. FLMS receives 100% of each charitable contribution. CH 3578.*



This year, NALMS and the Florida Lake Management Society invite you to join us for the 2007 NALMS Symposium in the heart of Walt Disney World® at the Coronado Springs Resort. It's been 20 years since NALMS first visited the Orlando area, and if you haven't been to Orlando lately, you will be amazed at the growth that has occurred. Orlando is now home to three major theme parks, numerous smaller ones, and is the second most desired vacation spot in the U.S. White sandy beaches are less than 1 hour away.

Florida is also home to more than 10,000 lakes, including Lake Okeechobee—the second largest lake in the U.S. after the Great Lakes. In fact, from the air, it sometimes appears that there is little solid ground to stand on. Florida is surrounded by water on three sides, and the Atlantic Ocean and Gulf of Mexico contribute to the semi-tropical climate. Late October and November are special times in Central Florida, with daily highs often in the upper 70s and low 80s, and gentle warm breezes. The State of Florida is a leader in lake-related research and restoration efforts. The Florida Everglades is the site of the largest environmental restoration project ever attempted. It is in recognition of these on-going efforts that the 2007 NALMS Conference theme of “Understanding the Science of Lake Management” was selected. The Symposium will emphasize scientific aspects of lakes and use of scientific concepts to make sound management decisions.

## Contact Information

Jim Griffin, Symposium Co-Chair  
[griffin@arch.usf.edu](mailto:griffin@arch.usf.edu)

John Burns, Program Chair  
[jwburns@mactec.com](mailto:jwburns@mactec.com)

Harvey Harper, Sponsorship & General Information  
[hharper@erd.org](mailto:hharper@erd.org)

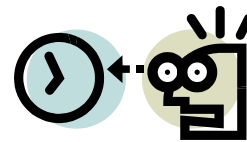
Or contact the NALMS office directly at  
(608) 233-2836

## Important Deadlines

September 21 — End of early-bird registration.

September 28 — Last day of hotel conference rate.

October 19 — End of regular registration.



## Chapter News and Contacts

*Local chapters often hold meetings and participate in local events. Please contact your local chapter representative to get involved!*

### Southeast Chapter

Todd Olson  
[tolson@avcaquatic.com](mailto:tolson@avcaquatic.com)

### Northeast Chapter

John Burns  
[jwburns@mactec.com](mailto:jwburns@mactec.com)

### Central Chapter

Rick Baird  
[rbaird@ocfl.net](mailto:rbaird@ocfl.net)

### Northwest Chapter

Sean McGlynn  
[mcglynnlabs@cs.com](mailto:mcglynnlabs@cs.com)

### Southwest Chapter

Kelli Levy  
[klevy@pinellascounty.org](mailto:klevy@pinellascounty.org)

A special  
congratulations to  
John Burns and  
Michelle Jean-  
sonne on the birth  
of their baby girl!



## Editor's Corner

There are all kinds of exciting things happening with FLMS! These include the NALMS conference in Orlando, the 2008 FLMS conference in Sandestin and the many new “Love Your Lakes” projects occurring throughout the state.

I encourage each of you to get involved with your local chapter. Don't forget to spread the word about our new free student membership to all of the future limnologists out there.

The goal of the FLMS newsletter is to provide a method to inform all FLMS members of the activities and efforts throughout all of Florida. Please let me know of any other upcoming events, conferences or articles that you would like included in the newsletter.

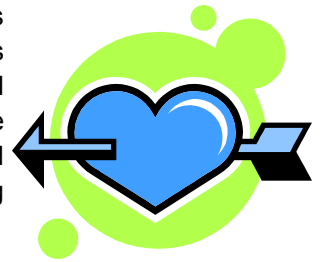
Please send comments and information to:

Shannon Carter Wetzel

[swetzel@seminolecountyfl.gov](mailto:swetzel@seminolecountyfl.gov)

# FLMS “LOVE YOUR LAKE” COST-SHARE PROGRAM

FLMS has created a cost-share program that funds lake, pond and shoreline projects demonstrating management techniques that help protect, preserve and restore Florida’s aquatic resources. Each year FLMS solicits grant proposals describing successful management projects. FLMS will provide matching funds for expenses incurred by the selected applicant. Expenditures may be in the form of labor or monetary contributions utilized in the program. Proposals are reviewed by a selection committee based on the following criteria:



Monetary or labor match — programs encouraging community involvement are strongly recommended.

Location — project must be accessible to the public (may include large communities or neighborhoods—dependent on accessibility).

Signage — educational component explaining project.

Water quality enhancements — examples include xeriscaping, lake-water irrigation, environmental berm and swale, and other innovative erosion control techniques.

**“Love Your Lake” project proposals must be submitted by March 1, 2008. Projects must be completed by May 1, 2009.** Shoreline management projects may require permits from the Department of Environmental Protection and/or the Water Management District, as well as one from your local municipality. The applicant is responsible for obtaining all permits required before starting the project. If you have any questions, please e-mail Chuck Hanlon at [chanlon@sfwmd.gov](mailto:chanlon@sfwmd.gov). For more details about the “Love Your Lake” cost-share program, please visit [www.flms.net](http://www.flms.net).

## 2007 FLMS “Love Your Lake” Award Recipient Camp Chowenwaw



Camp Chowenwaw is a 150-acre park that Clay County purchased last year from the Girl Scouts. The parcel has 100 acres of wetlands and 50 acres of uplands, bounded by Black Creek to the north and east, Peters Creek to the west, land to be developed along U.S. 17 and low-density residential property to the south. The Scouts operated the camp for more than 70 years before deciding to relocate due to encroaching development. The county plans to offer activities such as camping, kayaking, canoeing, swimming, fishing and a trail system through the wetlands this year.



One important undertaking that the State Park, along with the assistance of MACTEC Environmental Engineering and Consulting, Inc (MACTEC), was the successful restoration of the “concrete pond” that had once been a swimming/fishing hole during the Girl Scout days. The maintenance plan involved an overall wet dredging of the pond and the creation of a gradual slope into the pond constructed out of the muck that was dredged. Invasive plants were removed and native aquatics and wetland plants were established in and around the pond and included plants such as fragrant water lily, tape grass, Illinois pond weed, yellow cana, soft rush, and duck potato. This ordinary pond was creatively transformed into an

“ecological laboratory” where children can participate in tours, demonstrations, and hands-on environmental learning activities. They can learn about the fish, plants, and aquatic invertebrates that inhabit the pond and collect these organisms using dipnets. Ongoing plans for this project include the construction of a stationary dock and a site-seeing boardwalk on the backside of the pond. The establishment of educational signage is also in progress to explain the project as well as illustrate various educational information regarding aquatic plants, fish, and invertebrates.

### For more information about this project contact:

Dave Mandrella, Head Park Ranger at Camp Chowenwaw  
Green Cove Springs, FL. (904) 813-3903  
[David.Mandrella@co.clay.fl.us](mailto:David.Mandrella@co.clay.fl.us).

Ann Shortelle, Chief Scientist at MACTEC Environmental Consulting  
Gainesville, FL. (352) 333-2623  
[abshortelle@mactec.com](mailto:abshortelle@mactec.com)

Heather Hammers, Project Scientist at MACTEC Environmental Consulting  
Gainesville, FL. (352) 333-6613  
[hrhammers@mactec.com](mailto:hrhammers@mactec.com)

